

LED Gas Station Canopy Light

GS-01-G7



Better solutions for Led Gas Station Canopy Light

- IP65 water-proof
- AC100-277V 50/60Hz
- Easy Installation
- 140Lm/w

Operating Temp.: -40°C~+50°C Storage Temp.: -40°C~+80°C



Options

Voltage	CCT
AC100-277V	3000K
	4000K
	5000K
	5700K

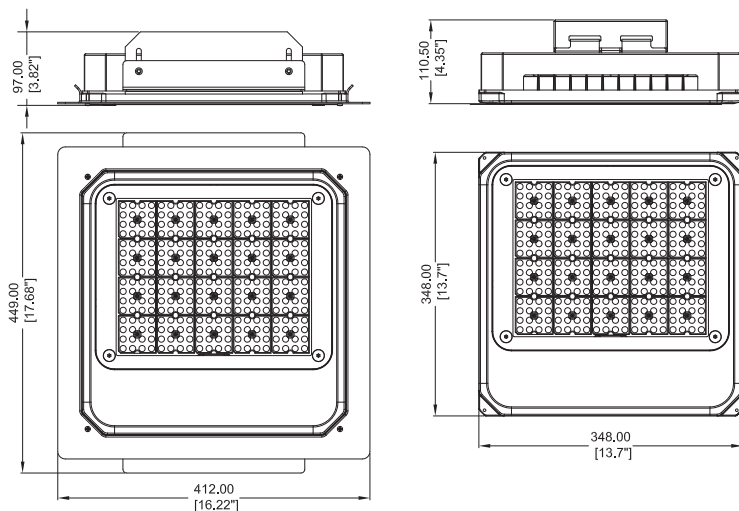
Application

The LED Gas Station Light provides a energy saving solution to a wide spectrum of applications including , but not limited to security lighting in schools,office, complexes , light commercial development , apartments , parking garages, entryways,and stairwells. It also can be used in workshop,warehouse,parking lot,toll gate , gas station , supermarket , exhibition hall , gym and other places.

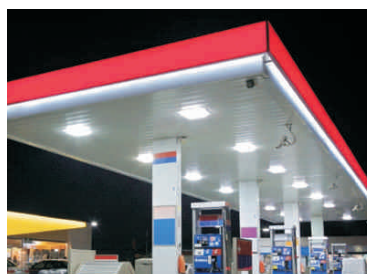
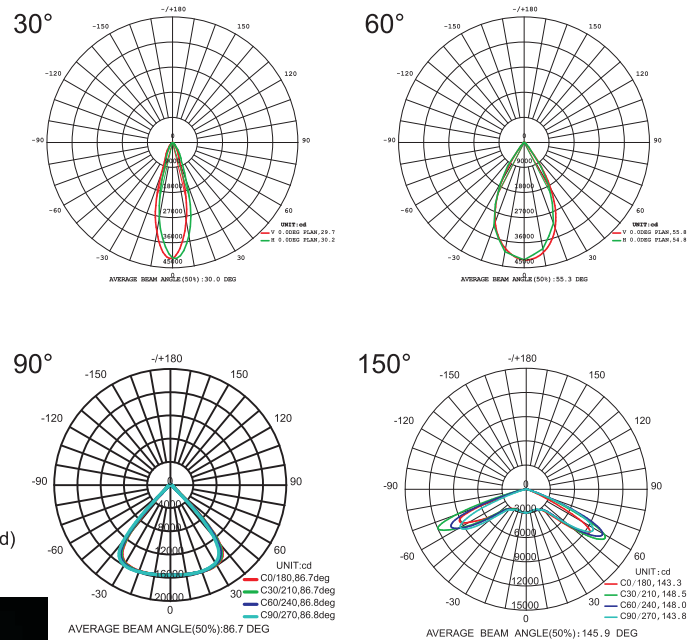
Specifications

Item	Power	Luminous Efficacy	Leds	CRI	Weight	Beam Angle
GS80W-01-G7	80W	140lm/W	Lumileds 2835	> 80	7.80kg(17.2lbs)	30°/60°/90°/150°
GS100W-01-G7	100W	140lm/W	Lumileds 2835	> 80	7.80kg(17.2lbs)	30°/60°/90°/150°
GS120W-01-G7	120W	140lm/W	Lumileds 2835	> 80	7.80kg(17.2lbs)	30°/60°/90°/150°
GS150W-01-G7	150W	140lm/W	Lumileds 2835	> 80	7.80kg(17.2lbs)	30°/60°/90°/150°

Dimensions(mm)



Photometry



GS-01-G7 LED Gas Station Canopy Light

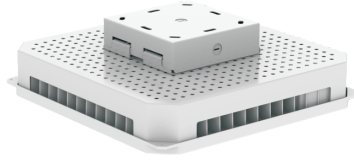


Model Options

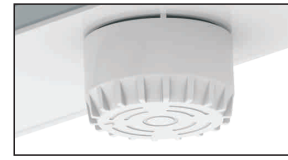
P1



P2



Microwave Motion Sensor Options



Default Setting:
 Detection area:100%,
 Hold time:5 seconds,
 Daylight threshold:50lx,
 Stand-by dimming level:50%,
 Stand-by period:10 seconds

Installation and use

P1 Recessed Installation Frame

<p>01</p> <p>Hole Diameter : Max 400x400mm Min 370x370mm</p>	<p>02</p>	<p>03</p>
<p>04</p> <p>Brown(Black) -- L Blue(White) -- N Green/Yellow -- GND</p>	<p>05</p>	<p>06</p>

P2 Surface mounting installation(standard)

<p>01</p> <table border="1"> <tr> <td>d1</td> <td>Ø6mm</td> </tr> <tr> <td>L2</td> <td>160mm</td> </tr> <tr> <td>L1</td> <td>120mm</td> </tr> </table>	d1	Ø6mm	L2	160mm	L1	120mm	<p>02</p>	<p>03</p>
d1	Ø6mm							
L2	160mm							
L1	120mm							
<p>04</p> <p>Brown(Black) -- L Blue(White) -- N Green/Yellow -- GND</p>	<p>05</p>	<p>06</p>						